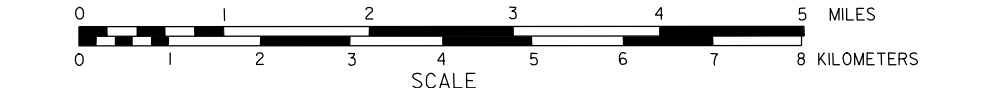


# GENERAL HIGHWAY MAP GARFIELD COUNTY NEBRASKA

PREPARED BY THE  
**DEPARTMENT OF ROADS**  
INFORMATION SYSTEMS DIVISION  
IN COOPERATION WITH THE  
**U.S. DEPARTMENT OF TRANSPORTATION**  
FEDERAL HIGHWAY ADMINISTRATION

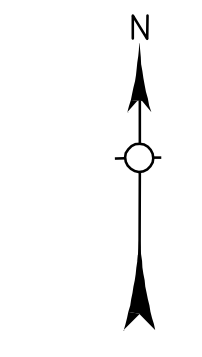
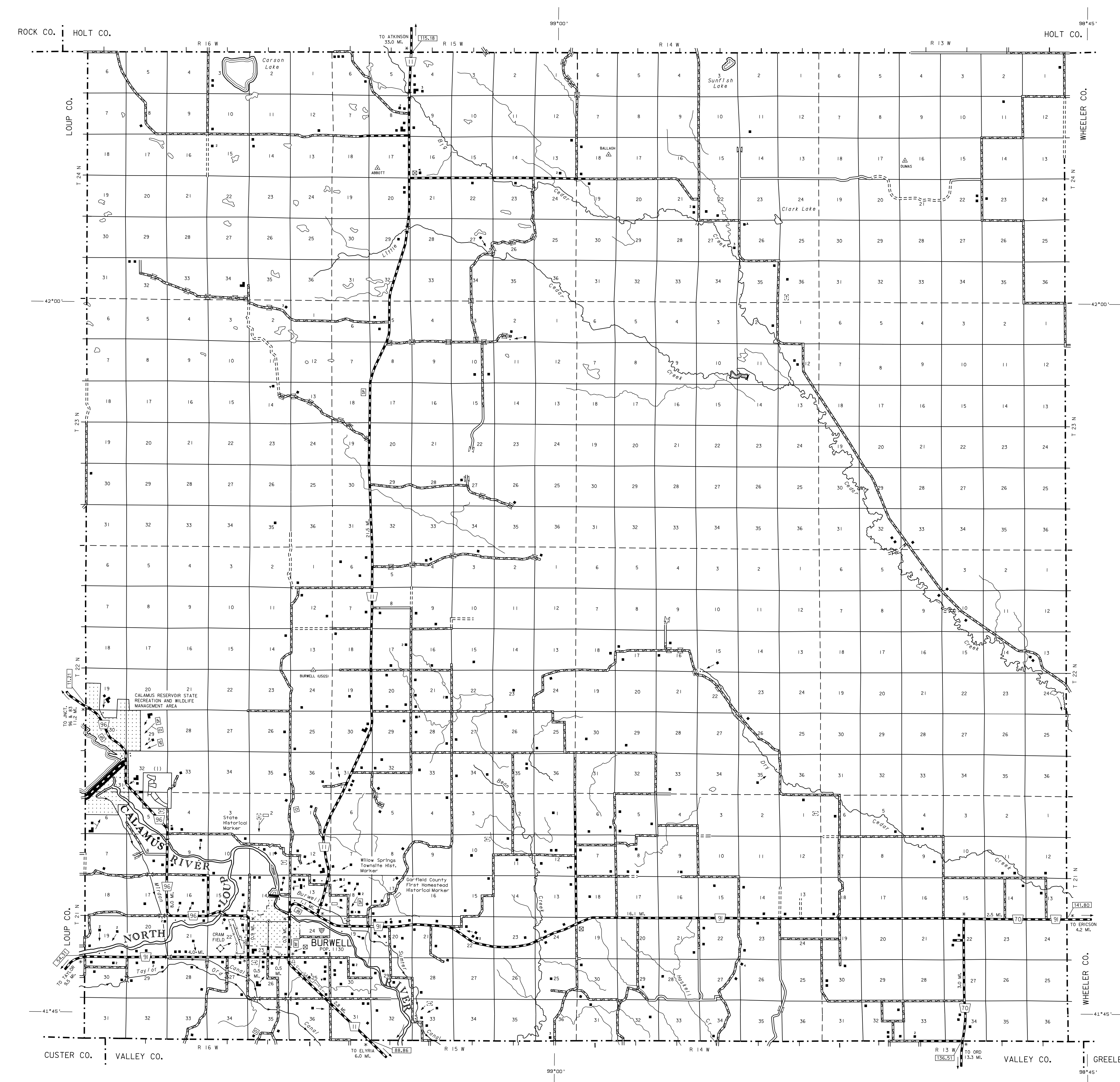
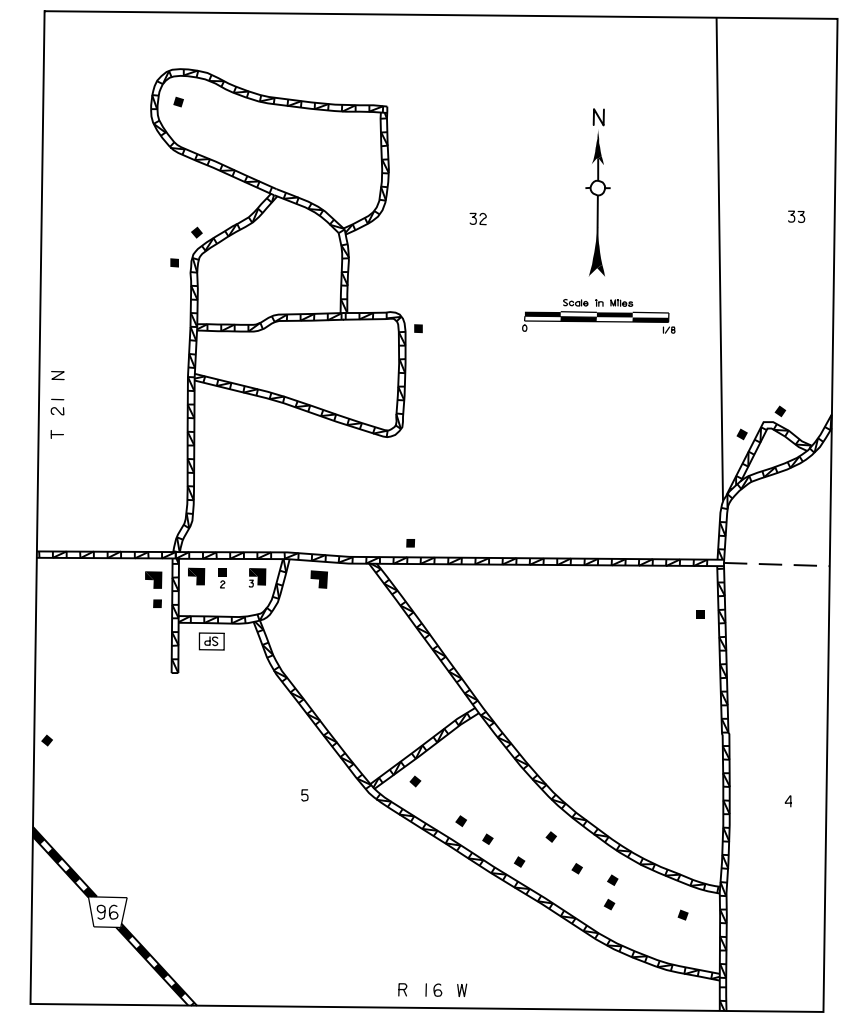


INVENTORY DATE:  
**2003**

REVISION HISTORY			
NAME	DATE	REVISION	COUNTY
S. WILLIAMS	FEB. 2001	ADAMS ROAD	GARFIELD COUNTY
STEVEN B. BIK	NOV. 2003	CO. HWY SUPERINTENDENT	GARFIELD COUNTY

### LEGEND

- |   |  |
|---|--|
| <ul style="list-style-type: none"> <li>Primitive Road.....</li> <li>Unimproved Road.....</li> <li>Gravel or Crushed Rock.....</li> <li>Asphalt/Bituminous Surface.....</li> <li>Concrete/Brick Surface.....</li> <li>Multiple Lane Undivided Highway.....</li> <li>Divided Highway.....</li> <li>Interstate Highway with Full Central of Access.....</li> <li>State Roads and Streets.....</li> <li>911 NAMED/Numbered Roads.....</li> <li>Interstate-Numbered Highway.....</li> <li>US-Numbered Highway.....</li> <li>State-Numbered Highway.....</li> <li>State-Numbered Highway Spur.....</li> <li>State-Numbered Highway Link.....</li> <li>Highway Reference Post Number.....</li> <li>Interstate Exit Number.....</li> <li>Wide Stream.....</li> <li>Narrow Stream.....</li> <li>Irrigation Ditch.....</li> <li>Reservoir, Pond or Lake.....</li> <li>Reservoir With Dam.....</li> <li>Highway Bridge-Any Type over 20' span.....</li> <li>Small Bridges-Closely Spaced.....</li> <li>Structures Indicate Tolls when Bridges are Grouped.....</li> <li>General Bridge Woods, Steel, Concrete.....</li> <li>Arch Bridge.....</li> <li>Truss Bridge.....</li> <li>Pedestrian Underpass.....</li> <li>Pedestrian Overpass.....</li> <li>Railroad Underpass.....</li> <li>Railroad Overpass.....</li> <li>Dam with Road on Top.....</li> <li>Cattle Guard.....</li> <li>Dwelling.....</li> <li>Row of Dwellings.....</li> <li>Cemetery.....</li> <li>Church or Other Religious Institution.....</li> <li>Church with Cemetery Adjoint.....</li> <li>Hospital.....</li> <li>Business.....</li> <li>Industrial Plant.....</li> <li>Filling Station.....</li> <li>Grain Elevator.....</li> </ul> | <ul style="list-style-type: none"> <li>Aggregate Pit.....</li> <li>Agricultural Experimental Station.....</li> <li>Educational Institutions.....</li> <li>Public Use Area.....</li> <li>Recreational Facilities.....</li> <li>Rest Area.....</li> <li>Ranger Station.....</li> <li>Flax Hatchery.....</li> <li>Community Hall.....</li> <li>Correctional Institution.....</li> <li>Tourist Court or Motel.....</li> <li>Monument-Small.....</li> <li>Museum.....</li> <li>Firestation.....</li> <li>Courthouse.....</li> <li>Armory.....</li> <li>Rest of Road.....</li> <li>Highway Maintenance Yard.....</li> <li>Dump Area.....</li> <li>Sewage Disposal Plant.....</li> <li>Water Supply Stand Pipe.....</li> <li>Pipe Line.....</li> <li>Transmission Line.....</li> <li>Power Plant.....</li> <li>Radio or TV Station.....</li> <li>Pumping Station.....</li> <li>Weight Station or Port of Entry.....</li> <li>Commercial or Municipal Airport.....</li> <li>Airport with Paved Runways.....</li> <li>State Boundary.....</li> <li>County Boundary.....</li> <li>Township Line.....</li> <li>Section Line.....</li> <li>Corporate Limit Lines.....</li> <li>Parks and Other Reservations.....</li> <li>Boundary Limits of Area Shown in Enlargements Use Enlargements for Accuracy.....</li> <li>State Capital.....</li> <li>County Seat.....</li> <li>Other Cities and Villages.....</li> <li>Incorporated City or Village.....</li> <li>Triangulation Station.....</li> <li>Points Between Which Distances Are Measured Indicated Thus.....</li> <li>Latitude and Longitude.....</li> </ul> |
|---|--|



LAMBERT CONFORMAL CONIC PROJECTION  
1983 NORTH AMERICAN DATUM  
NEBRASKA COORDINATE SYSTEM

