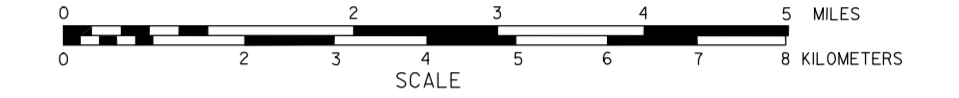


GENERAL HIGHWAY MAP MORRILL COUNTY NORTH HALF NEBRASKA

PREPARED BY THE
DEPARTMENT OF ROADS
INFORMATION SYSTEMS DIVISION
IN COOPERATION WITH THE
U.S. DEPARTMENT OF TRANSPORTATION
FEDERAL HIGHWAY ADMINISTRATION

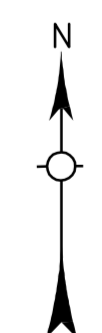
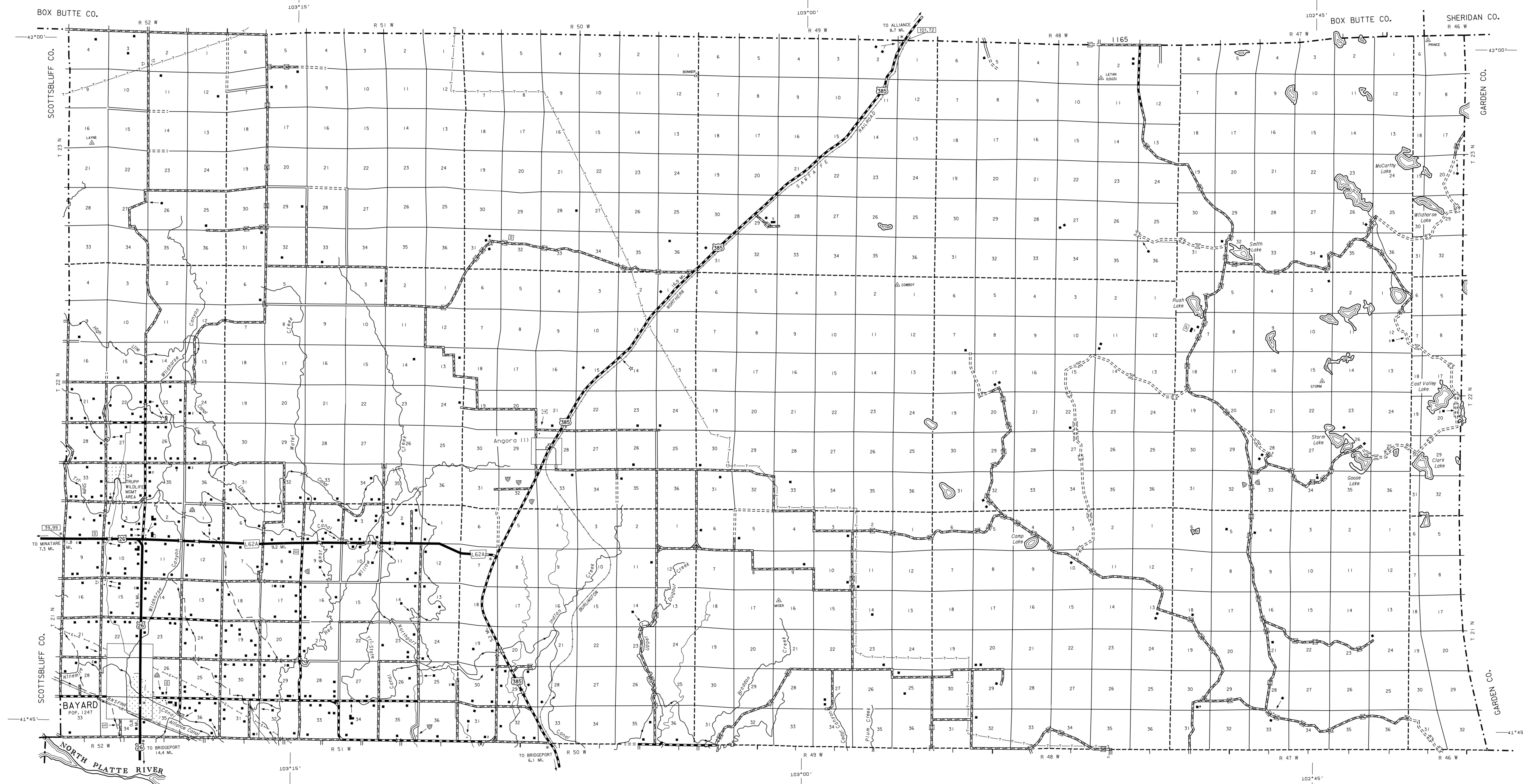
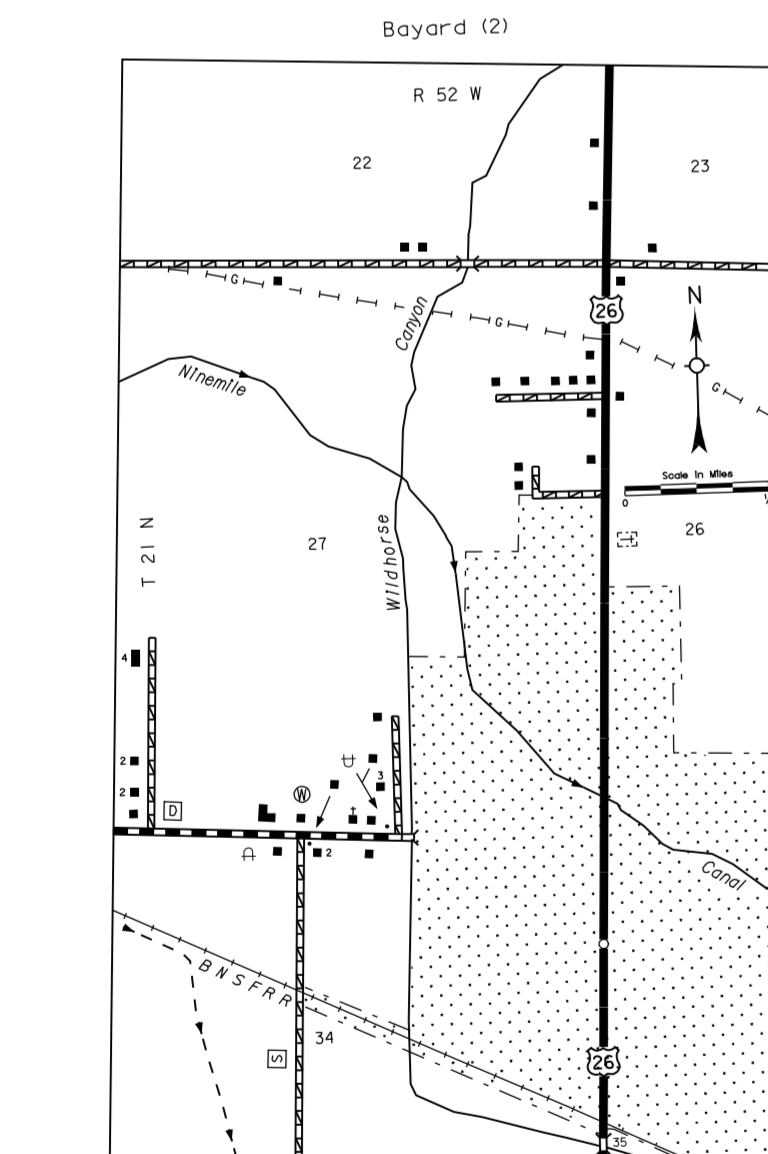
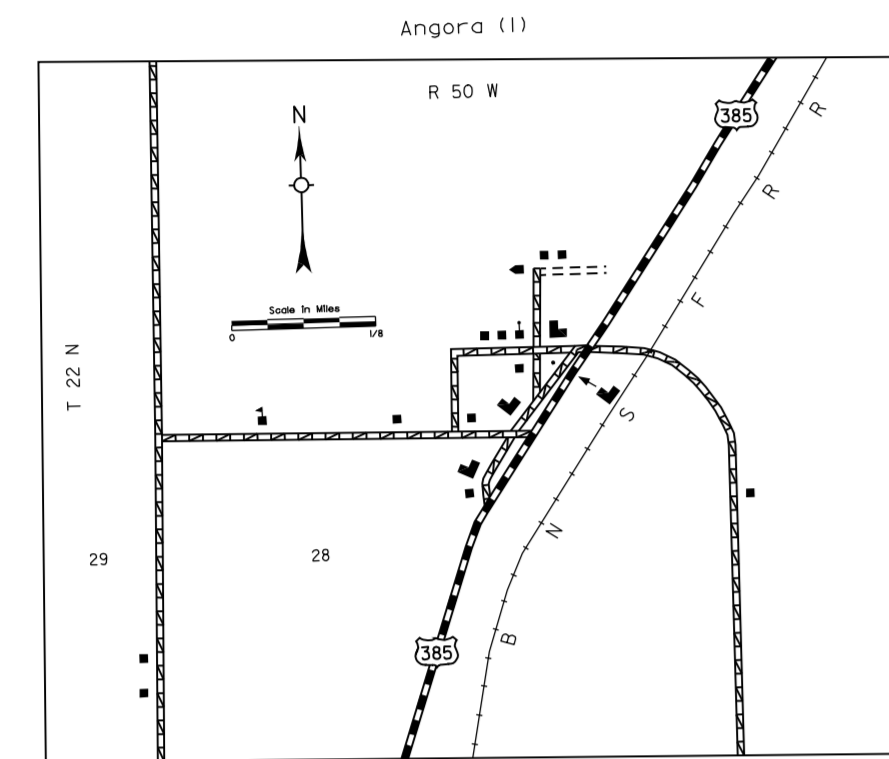
1983



REVISION HISTORY			
NAME	DATE	REVISION	REVISION
GLENN WILLIAMS	FEBRUARY 2004	ADDED TRUMP RMA	

LEGEND

- Primitive Road
- Unimproved Road
- Gravel or Crushed Rock
- Asphalt/Bituminous Surface
- Concrete/Block Surface
- Multiple Lane Undivided Highway
- Divided Highway
- Interstate Highway with Full Control of Access
- Side Roads and Streets
- 911 NAMED/Numbered Roads
- Interstate-Numbered Highway
- US-Numbered Highway
- State-Numbered Highway
- State-Numbered Highway Spur
- State-Numbered Highway Link
- Highway Reference Post Number
- Interstate Exit Number
- Wide Stream
- Narrow Stream
- Irrigation Ditch
- Reservoir, Pond or Lake
- Reservoir, With Dam
- Highway Bridge-Any Type Over 20' span
- Small Bridge-Closely Spaced, Spacings Indicate Intls. within which bridge are grouped
- General Bridge - Wood, Steel, Concrete
- Arch Bridge
- Truss Bridge
- Pedestrian Underpass
- Railroad Overpass
- Railroad Underpass
- Railroads
- Dam with Road on Top
- Cattle Guard
- Dwelling
- Row of Dwellings
- Cemetery
- Church or Other Religious Institution
- Church with Cemetery Adjacent
- Hospital
- Business
- Industrial Plant
- Filling Station
- Grain Elevator
- Aggregate Pit
- Agricultural Experimental Station
- Educational Institutions
- Public Use Area
- Recreational Facilities
- Rest Area
- Ranger Station
- Fish Hatchery
- Community Hall
- Correctional Institution
- Tourist Court or Motel
- Monument-Small
- Museum
- Firestation
- Courthouse
- Armory
- Post Office
- Highway Maintenance Yard
- Dump Area
- Sewage Disposal Plant
- Water Supply Stand Pipe
- Pipe Line
- Transmission Line
- Power Plant
- Power Substation
- Radio or TV Station
- Pumping Station
- Weight Station or Port of Entry
- Commercial or Municipal Airport
- Airport with Paved Runways
- State Boundary
- County Boundary
- Township Line
- Section Line
- Corporate Limit Lines
- Parks and Other Reservations
- Boundary Limits of Area Shown in Enlargements (see enlargements for cultural)
- State Capital
- County Seat
- Other Cities and Villages
- Incorporated City or Village
- Triangulation Station
- Points Between Which Distances Are Measured Indicated Thus
- Latitude and Longitude



LAMBERT CONFORMAL CONIC PROJECTION
1983 NORTH AMERICAN DATUM
NEBRASKA COORDINATE SYSTEM

