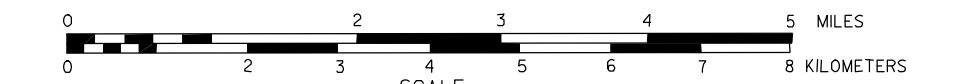


# GENERAL HIGHWAY MAP PERKINS COUNTY NEBRASKA

PREPARED BY THE  
DEPARTMENT OF ROADS  
INFORMATION SYSTEMS DIVISION  
IN COOPERATION WITH THE  
U.S. DEPARTMENT OF TRANSPORTATION  
FEDERAL HIGHWAY ADMINISTRATION

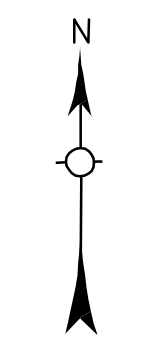
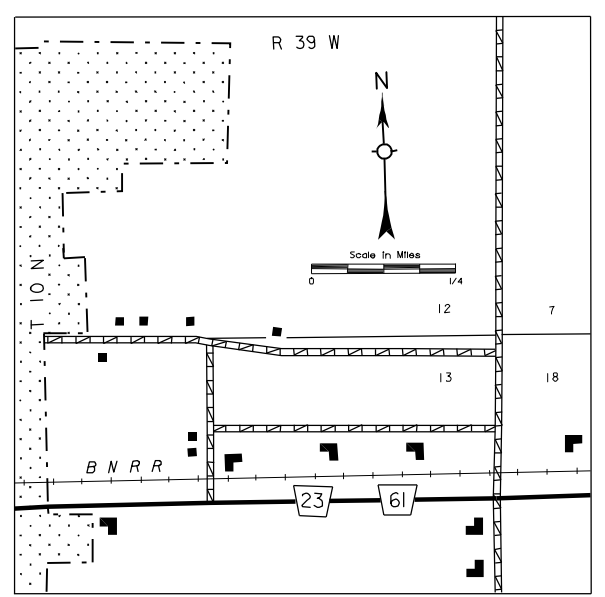
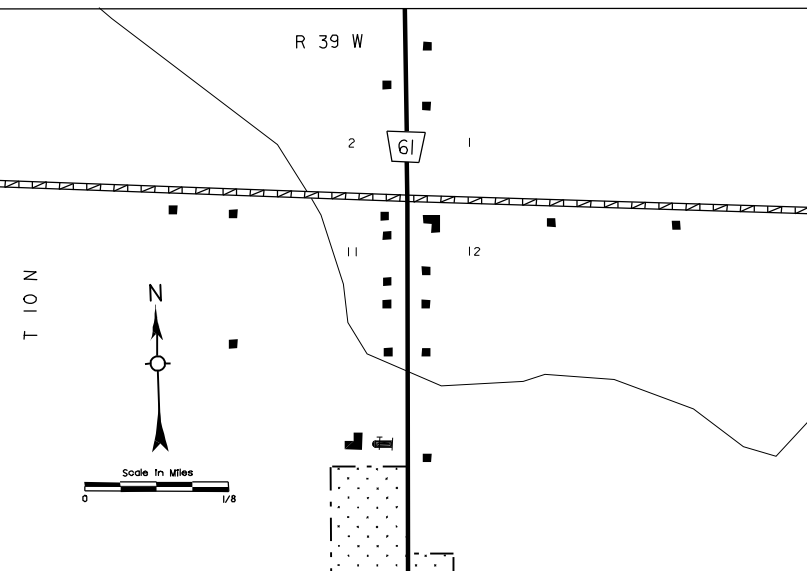
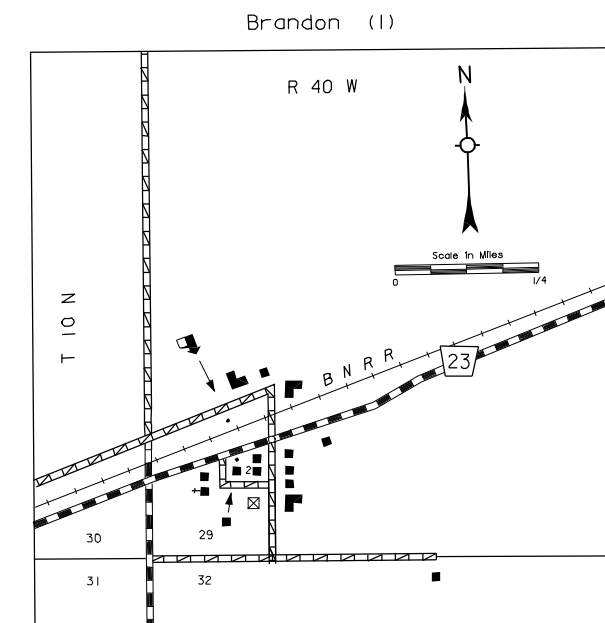
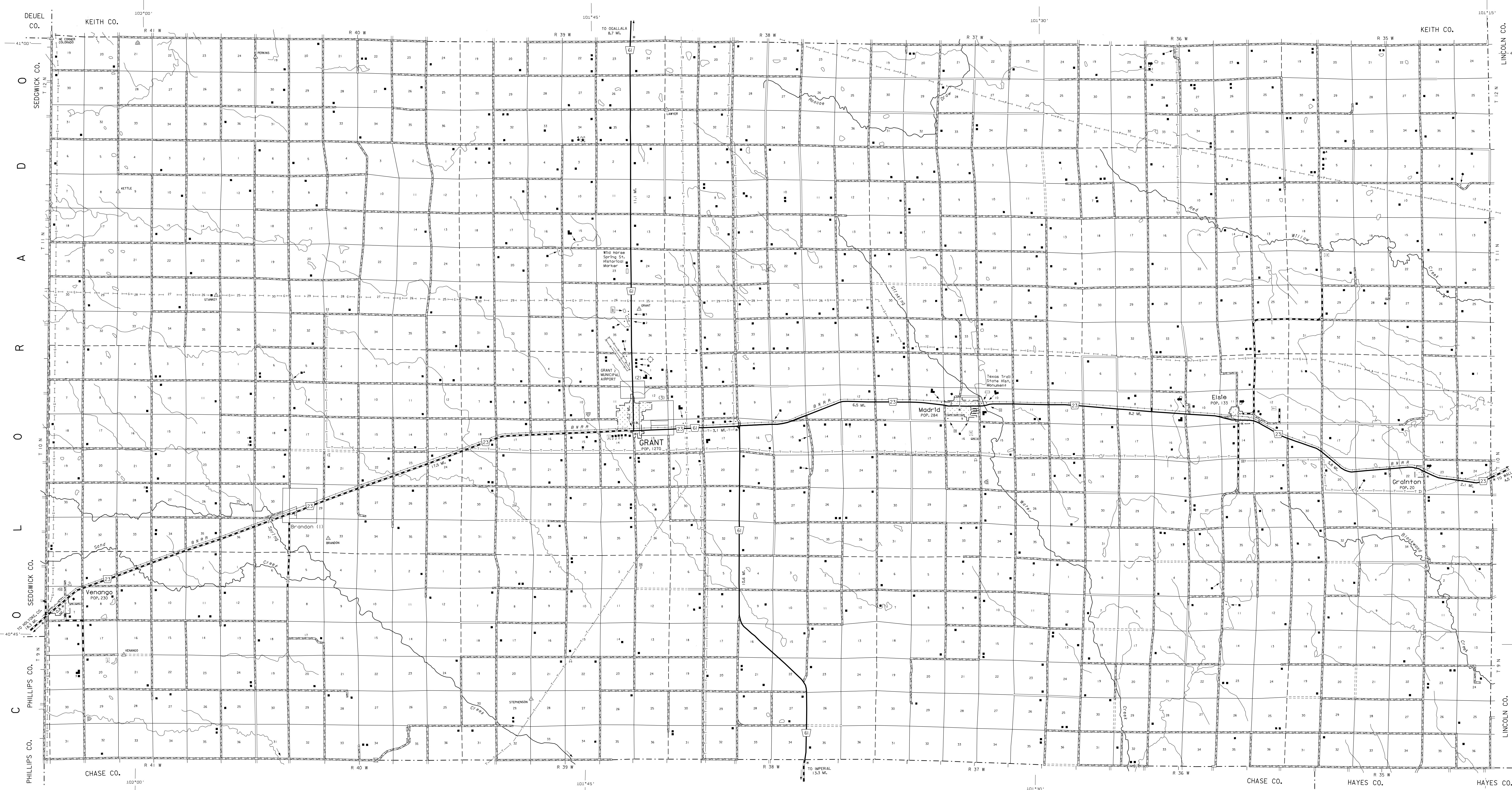
1985



REVISION HISTORY		
NAME	DATE	REVISION

## LEGEND

- |   |  |
|---|--|
| <ul style="list-style-type: none"> <li>Primitive Road</li> <li>Unimproved Road</li> <li>Gravel or Crushed Rock</li> <li>Non Rigid Pavement Asphalt or Brick</li> <li>Rigid Pavement Asphalt or Brick</li> <li>Multiple Lane Undivided Highway</li> <li>Divided Highway</li> <li>Interstate Highway with Full Control of Access</li> <li>State-Numbered Highway</li> <li>US-Numbered Highway</li> <li>State-Numbered Highway</li> <li>State-Numbered Highway Spur</li> <li>State-Numbered Highway Link</li> <li>Interstate Exit Number</li> <li>Wide Stream</li> <li>Narrow Stream</li> <li>Irrigation Ditch</li> <li>Reservoir, Pond or Lake</li> <li>Reservoir with Dam</li> <li>Highway Bridge-Any Type Over 20' Span</li> <li>Small Bridges-Closely Spaced</li> <li>Large Bridges-Indicate Name when Bridges are Grouped</li> <li>General Bridge</li> <li>Arch Bridge</li> <li>Truss Bridge</li> <li>Pedestrian Underpass</li> <li>Pedestrian Overpass</li> <li>Railroad Overpass</li> <li>Railroad Underpass</li> <li>Dam with Road on Top</li> <li>Cattle Guard</li> <li>Dwelling</li> <li>Row of Dwellings</li> <li>Cemetery</li> <li>Church or Other Religious Institution</li> <li>Hospital</li> <li>Business</li> <li>Industrial Plant</li> <li>Filling Station</li> <li>Grain Elevator</li> <li>Aggregate Pit</li> <li>Agricultural Experimental Station</li> <li>Educational Institutions</li> </ul> | <ul style="list-style-type: none"> <li>Public Use Area</li> <li>Recreational Facilities</li> <li>Rest Area</li> <li>Ranger Station</li> <li>Fish Hatchery</li> <li>Community Hall</li> <li>Correctional Institution</li> <li>Tourist Court or Motel</li> <li>Monument-Small</li> <li>Museum</li> <li>Fire Station</li> <li>Courthouse</li> <li>Armory</li> <li>Post Office</li> <li>Highway Maintenance Yard</li> <li>Dump Area</li> <li>Sewage Disposal Plant</li> <li>Water Supply Stand Pipe</li> <li>Pipe Line</li> <li>Transmission Line</li> <li>Power Plant</li> <li>Power Substation</li> <li>Radio or TV Station</li> <li>Pumping Station</li> <li>Relight Station or Part of Entry</li> <li>Commercial or Municipal Airport</li> <li>Airport with Paved Runways</li> <li>State Boundary</li> <li>County Boundary</li> <li>Township Line</li> <li>Section Line</li> <li>Corporate Limit Lines</li> <li>Parks and Other Reservations</li> <li>Boundary Limits of Area Shown in Enclosures: See enclosures for details</li> <li>State Capital</li> <li>County Seat</li> <li>Other Cities and Villages</li> <li>Incorporated City or Village</li> <li>Triangulation Station</li> <li>Points Between Which Distances are Measured Indicated Thus</li> <li>Latitude and Longitude</li> <li>Nebraska Coordinate System in Thousands of Feet</li> <li>Universal Transverse Mercator Grid in Thousands of Feet</li> </ul> |
|---|--|



LAMBERT CONFORMAL CONIC PROJECTION  
1983 NORTH AMERICAN DATUM  
NEBRASKA COORDINATE SYSTEM

